



FLEXIBLE HTS SATELLITE SOLUTIONS WITH MULTI-LAUNCH CAPABILITY



TUSA | TASN F DI | / No Header

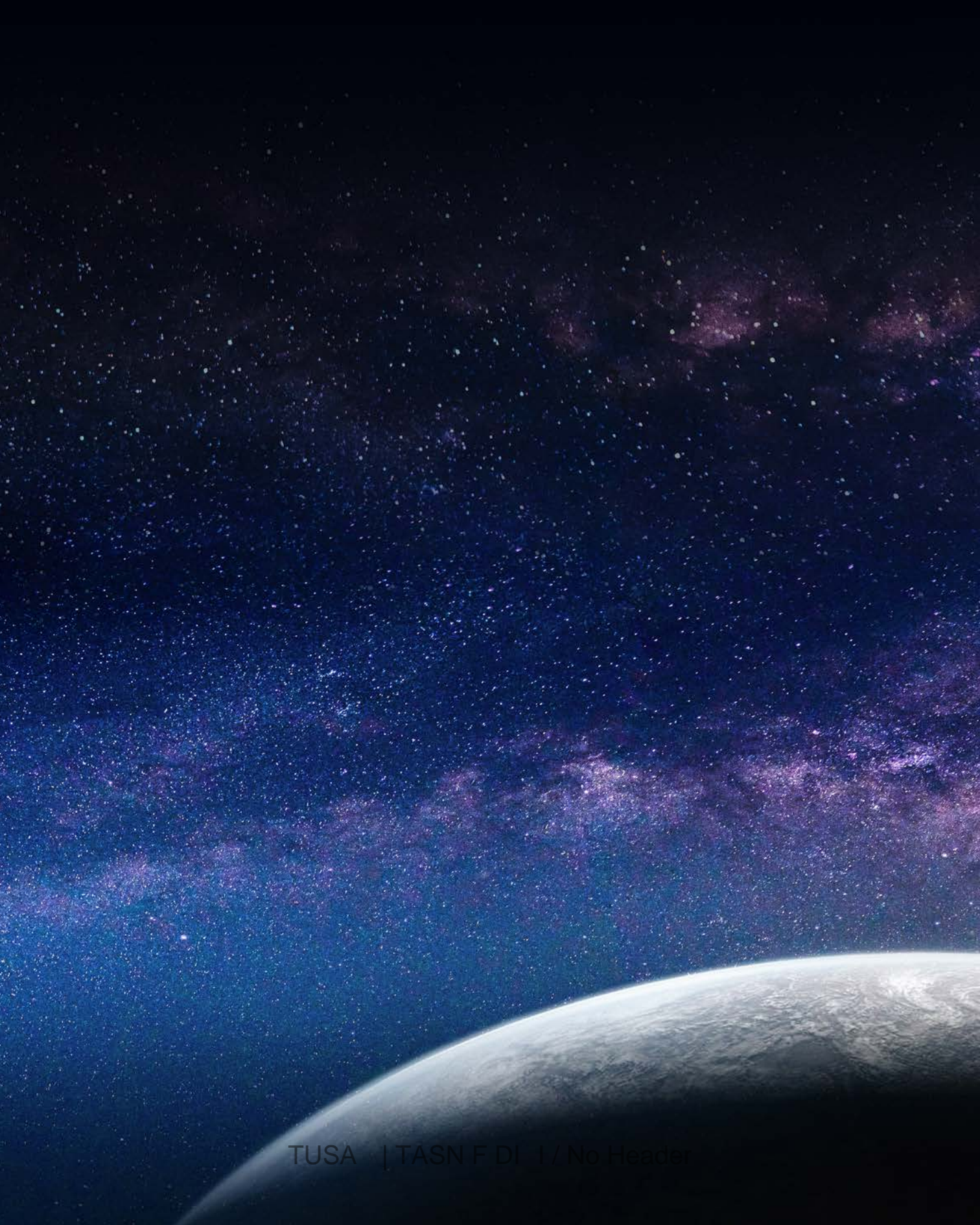
GSATCOM Space Technologies Inc.

Mustafa Kemal Mh. Dumlupinar Blv. ODTU Bilisim Merkezi
280/G No:1260 Cankaya, Ankara/Turkey

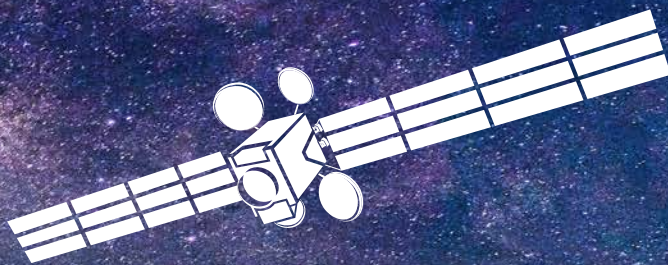
T-F +90 312 486 0330

www.gsatcom.com





WIDE BEAM AND HTS PAYLOAD FULL ELECTRICAL GEO SATELLITE FAMILY



This Document has been prepared by GSATCOM and it contains confidential information and/or brand features proprietary to GSATCOM. This Document shall not be reproduced, disclosed, distributed or repackaged or otherwise use, in whole or in part, in any format, without the prior written permission of GSATCOM. The recipient(s) shall only use this Document for the sole purpose of facilitating discussion with GSATCOM in respect of its business. GSATCOM reserves the rights to modify the content defined in this document at any time without prior notice.



CONTENTS

- 6 FLEXIBLE GEO SATELLITE

- 8 INTRODUCTION

- 10 ABOUT GSATCOM

- 12 SHAREHOLDERS

- 14 STRATEGIC ADVANTAGES

- 16 OVERVIEW

- 18 ROLES AND KEY FEAUTURES

- 23 BENEFITS FOR THE OPERATORS

- 24 MULTI-LAUNCH MISSIONS

- 26 PAYLOAD SOLUTIONS



High-Throughput
Satellite (HTS)



Payload
Flexibility



Full Electric
Propulsion



Optimized Payload
Power Budget



Modular Design



Multi-Launch
Support



Optimized for
Rideshare
Missions



Rapid Delivery

FLEXIBLE GEO SATELLITE

Flexible HTS Solutions with Multi-Launch Capability

GSATCOM Satellite Family offers broad range of telecommunication solutions implemented by a full-electric small size space segment. GSATCOM's new, modular and flexible design boosts global commercial operation capabilities and plays a significant role in cost efficient telecommunication market.

9



Customized Wide or Spot Beam Operations



Supports Up to 6 Reflector Antennas



Optimum Efficiency in CAPEX



15 Years Life Time

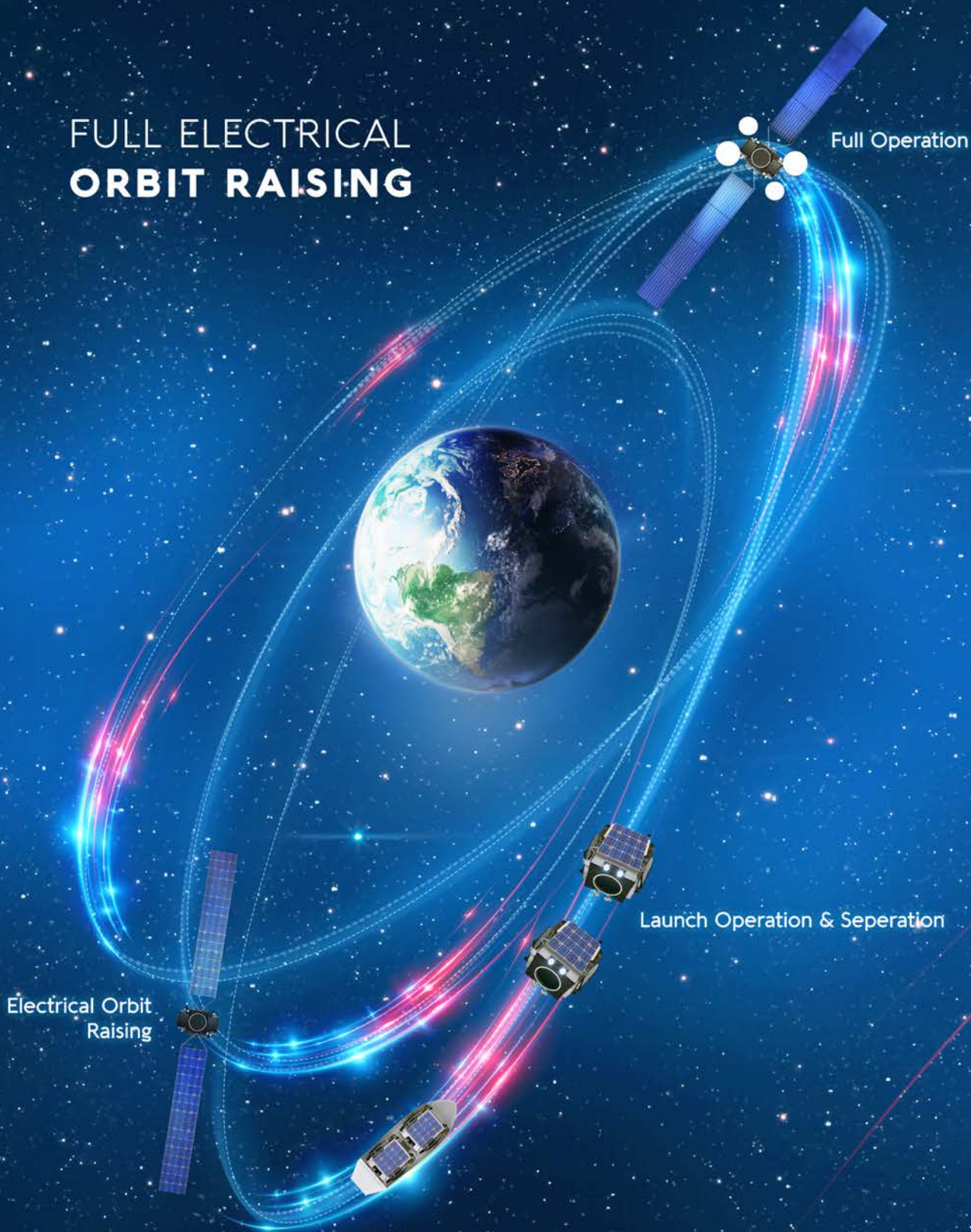


Flexibile Antenna Support



Successful Track Record of GSATCOM Shareholders

FULL ELECTRICAL ORBIT RAISING



INTRODUCTION

GSATCOM Small Size GEO Satellite is the telecommunication platform which is capable of accommodating a wide range of commercial payloads and missions from TV broadcasting to multimedia applications, data communication and mobile or fixed services in a wide range of frequency bands. Small Size GEO Satellite's new, modular and flexible design boosts competitiveness of the global operators in the commercial market.

The satellite has a small sized platform which employs telecommunication payloads for such as; Ka, Ku, X, C, S, L, UHF and other various frequency bands according to the end user requirements.

A precisely optimized modular design approach is adopted as the main baseline in Small Size GEO Satellite solution to meet diversified customer requirements.

FLEXIBLE SATELLITE
FLEXIBLE HTS SOLUTIONS WITH
MULTI-LAUNCH CAPABILITY

ABOUT GSATCOM

GSATCOM Space Technologies, Inc. is the Joint Venture Company of Turkish Aerospace Industries, Inc. and INVAP SE.



12

With the state-of-art space system AIT* facilities and strong capitalization of its shareholders, GSATCOM initiates conducts design based on its shareholders' space heritage, manufacture and market the cutting edge telecommunications satellites.

* AIT: Assembly, Integration and Test

GSATCOM provides its shareholders' successful track record, vertical expertise, space heritage and top class space systems infrastructure located in Europe and South America.



With the state-of-art space system facilities and strong capitalization of its shareholders, GSATCOM designs, manufactures and markets cutting edge telecommunications satellites.

GSATCOM Space Technologies combines leading edge infrastructure and expertise to strengthen its operational capabilities worldwide. GSATCOM GEO Satellite Family offers a range of telecommunication solutions based on a full electric small size geostationary platform.

With highly adaptive project models, GSATCOM presents advanced technology with affordable solutions for the global telecommunications satellite market.



Strong Financial Background



Successful Track Record



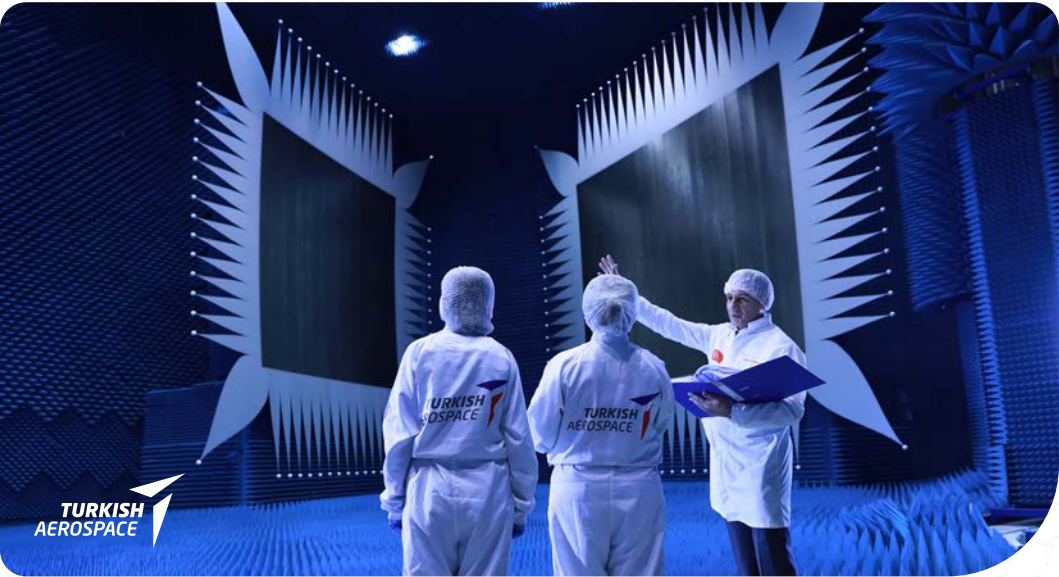
25+ Years Heritage in Space



Dedicated Facilities in Europe & South America

GSATCOM SHAREHOLDERS

Turkish Aerospace



Established in 1973

• Turkey's center of technology ranks among the top hundred global players in aerospace and defense arena

• Five Strategic Pillars:

- Space Systems Group
- Aircraft Group
- Helicopter Group
- Unmanned Aerial Systems (UAS) Group
- Aero-structures Group



More Than
10,000 Employee

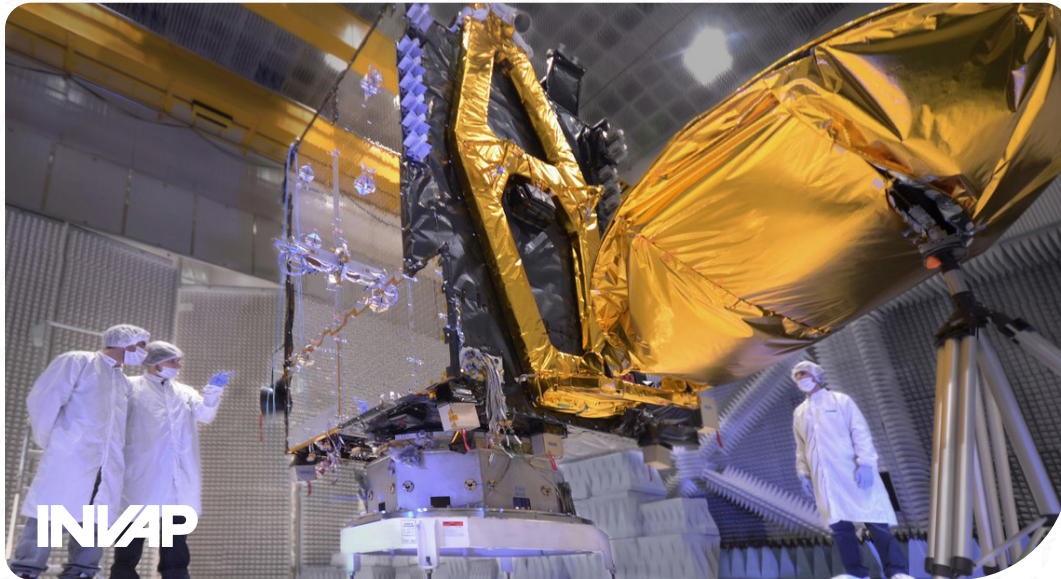


15.7 Billion \$
Backlog



2.3 Billion \$
Turnover

INVAP



Established in 1976

- World-class company located in Patagonia, Argentina
- Four Business Areas:
 - Nuclear: Research Reactors & Radioisotope Production
 - Space: LEO Earth Observation and GEO Telecom Satellites
 - Defense & Security: Radar for ATC, Defense and Meteorology
 - Technological Services and Information & Communications Technology



Prime Contractor of
ARSAT 1 & ARSAT 2 GEO
Satellites



Prime Contractor of
SAOCOM 1A and 1B SAR
Satellites



More Than
1.400 Employee

STRATEGIC ADVANTAGES

Taking Advantage of Parent Companies Strategic Assets

- Successful Track Record
- Space Heritage on LEO and GEO Missions
- Satellite Design Expertise & Proven Capabilities
- World Class Assembly, Integration and Test Facilities
- Global Operation Capability
- Servicing Locations in Europe and South America
- Full Solution Covering Space & Ground Segments
- Strong Financial Background
- Turnkey Delivery on Orbit







SYSTEM FEATURES

A Small Size GEO satellite integrating a communications payload with power consumption up to 7.5 kW and typical throughput capabilities.

GSATCOM Satellite Family offers broad range of telecommunication solutions implemented by a full-electric small size space segment. GSATCOM's new, modular and flexible design boosts global commercial operation capabilities and plays a significant role in cost efficient telecommunication market.

- Optional Digital Flexible Payload
- HTS Payload for Re-use of Spectrum
- Spot and Wide Beams
- Full Electrical Propulsion
- Payload Power: 1.5 to 7.5 kW
- Launch Mass : 500 kg to 2000kg
- Multi Launch and Rideshare Compatibility
- 74 cm to 120 cm User Antenna Dish
- Including but not limited to Ka, Ku, C, X and UHF band support



Communication Payload

- Flexible Payload
 - Digital Processor
 - Antenna Tile
- Wide Coverage Beams
- HTS Payload
 - Re-use of Spectrum
 - Multi-Spot Beams



Launch Mass

- 1,000 to 2,000 kg
- Rideshare: ~ 500 kg Option



Frequency Bands

- Ka, Ku, C, X, UHF etc.



Payload Power

- Up to 7.5 kW
- ~1.5 kW for Rideshare Option



Launch Compatibility

- Multi-Satellite Launch Compatibility



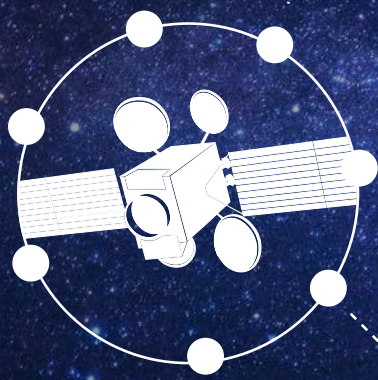
Achievable Throughput

- Up to 50 Gbps @ ~74cm to 1,2m User Antenna Dish



Propulsion

- Full Electrical Propulsion



KEY FEATURES

HTS ARCHITECTURE

A new approach on satellite communication systems that is capable of delivering higher throughput

FLEXIBLE PAYLOAD

Tailored payload solutions for in-orbit frequency re-configuration, adaptive coverage and power allocation needs of the users

ELECTRICAL PROPULSION

A Highly Efficient Propulsion System to perform Orbit Raising, Station Acquisition and Station Keeping of the Satellite

20

COST EFFICIENT AND RAPID DELIVERY

Reduced overall cost, shortened delivery time and rapid response to new market opportunities

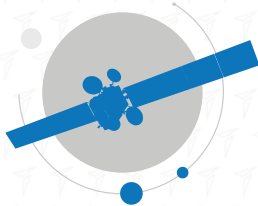
MULTI-LAUNCH CAPABILITY

By optimized rideshare and multi-launch solutions, this unique feature allows prominent launcher cost efficiency to end users

MODULAR DESIGN

GSATCOM modular and scalable concepts provide a more straightforward payload and platform integration





High-Throughput System (HTS)

Multi Spot Beam
Frequency Re-use &
Higher Spectrum Efficiency



Payload Flexibility

In-orbit re-configuration
Dynamic Resource &
Demand Management



Wide Beam Coverage

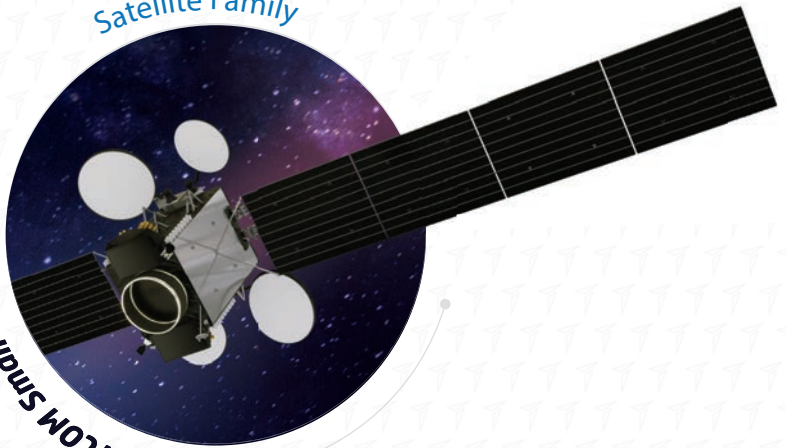
Wide Beam Coverage
Optimized for Exact
Customer Needs

Satellite Family

HTS



GSATCOM Small Size GEO



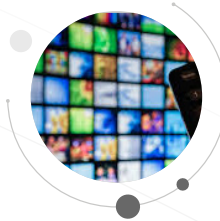
Flexible Payload



Wide Beam Coverage

TUSA | TASNEE D111 / No Header

CIVIL APPLICATIONS



Digital
Terrestrial
TV Connectivity



High Throughput
Broadband
Connectivity



Internet of
Things (IoT)



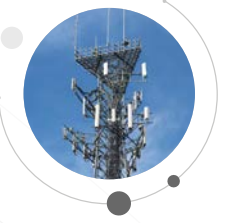
Mobility
(Aviation & Maritim Applications)



Content
Streaming



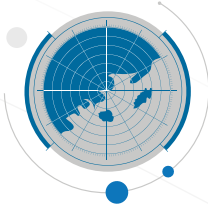
Cellular
Backhaul



Backward
Compatibilities
with Legacy Networks
(Wide Beams Coverage)



SECURITY APPLICATIONS



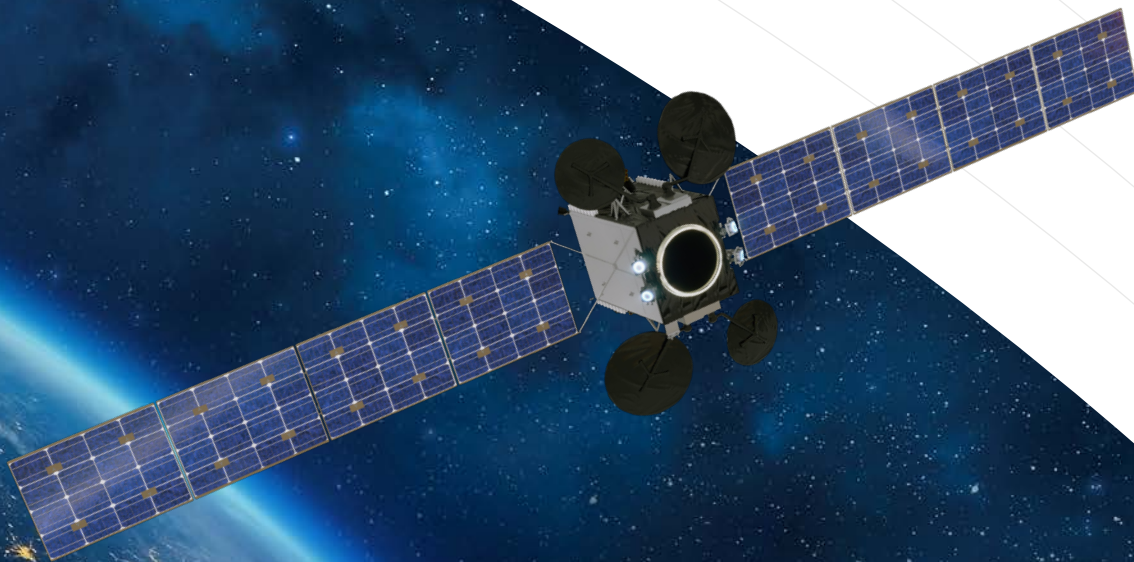
Intelligence
Gathering



Precise
Navigation



Secure
Communications



BENEFITS FOR THE OPERATORS



Financial

- Efficient CAPEX
- Faster Return of Investment
- Higher Capacity Fill-Up Rate



Business

- Dynamic Demand Management
- Quick Reaction for Evolving Market Needs
- Modular Capacity Investment



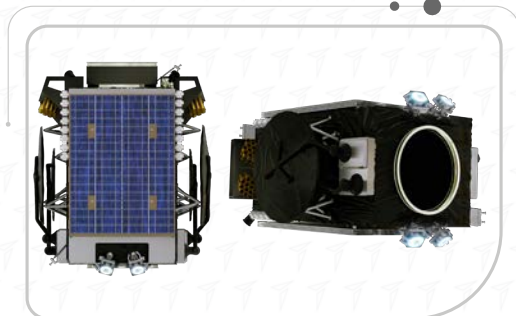
Operational

- In-orbit Re-configuration
- Changing Orbital Slot
- Changing Geographical Coverage



Regulatory

- Operational Built in to Use
- Saving the Existing Slot



MULTI-LAUNCH MISSIONS

- Optimized for multi-launch missions
- Fits on stack and rideshare launch configurations
- Resizeable system solutions
- Modular central cylinder design
- Scalable design from 1.000 kg to 2.000 kg mass
- Compatible with most known launchers
- Alternative 500 kg configuration option for Built In Use missions



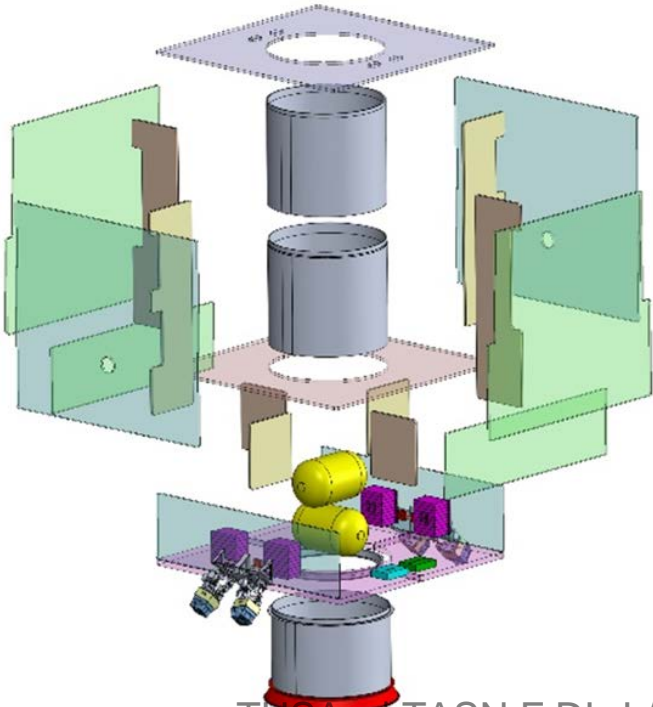
1194mm Interface
2.2m X 2.2m X 2.5m



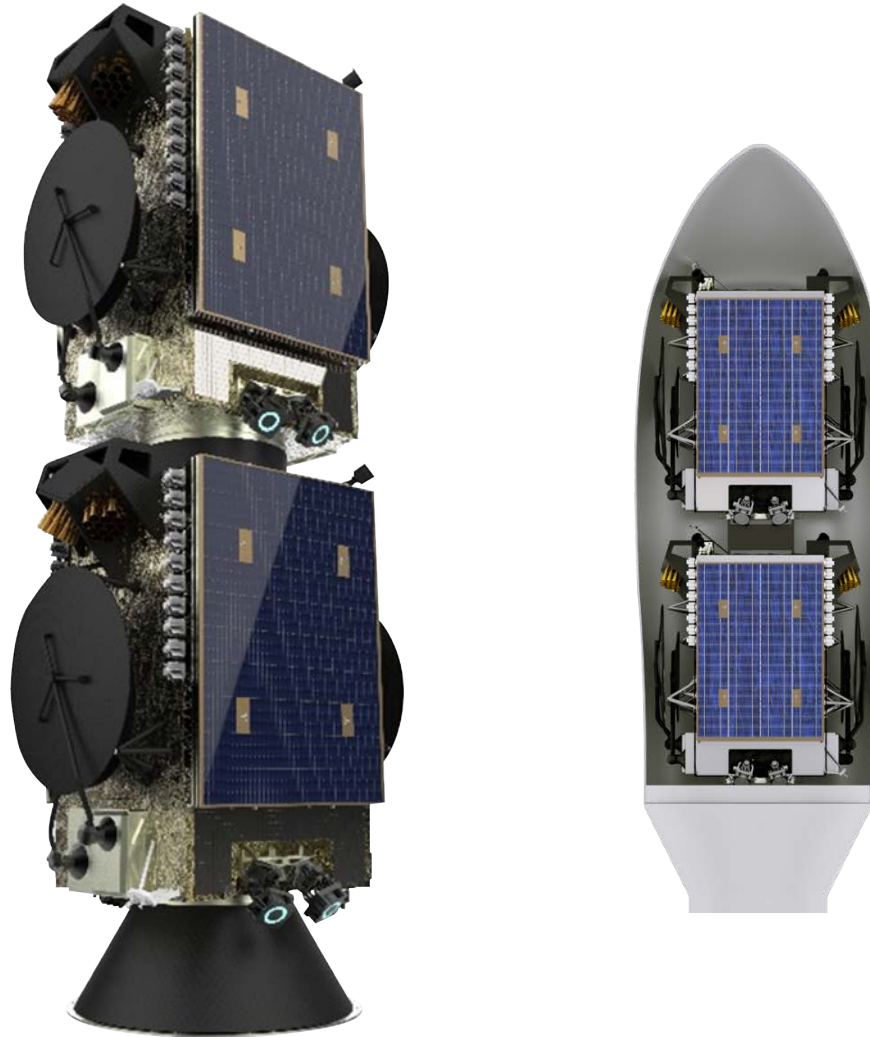
937mm Interface
1.7m X 1.7m X 2.1m



610mm Interface
1.2m X 1.2m X 1.7m



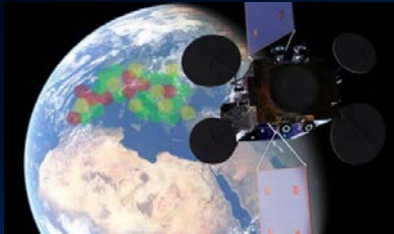
TUSA | TASN F DI I / No Header



Artistic Impression: Stack Configuration of GSATCOM Small Size GEO Satellites

PAYLOAD

- Optional Flexible Payload (Digital Processor & Antenna Tile)
- Payload Power: 1.5 to 5.7 kW
- HTS Payload & Re-use of Spectrum
- Ka, Ku, C, X, UHF Frequency Bands supported
- Multi-Spot & Wide Coverage Beams
- Achievable Throughput: 30 to 50 Gbps (typically 74 to 120 cm antenna dish at customer site)
- Modular Design and Optimized Interfaces



High Throughput Satellite (HTS) Payload

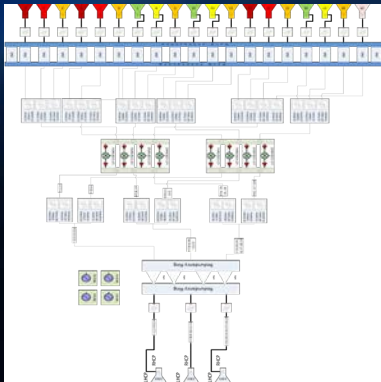
- Multiple Spot Beams
- Frequency Re-use

Flexible Payload

- In-orbit re-configuration
- Steerable beams

Fixed Satellite Services (FSS)

- High Speed Two-way Internet
- Two-way TV
- Two Way Data, Telephone, Fax





Broadcast Satellite Services (BSS)

- Direct-to-Home (DTH) TV/Audio

Bent Pipe Type Payloads

- HTS with Multiple Spot Beams
- Traditional Wide Beam
- Different Antenna Types (Reflectors & Feeds)

Flexible Type Payloads

- Processing Communication Payload (SDCP)
- Flexible On-Board Processing Unit (FOPU)
- Antenna Tile for Phased Arrays (FlexTile)



FLEXIBLE HTS SATELLITE SOLUTIONS
WITH MULTI-LAUNCH CAPABILITY



GSATCOM Space Technologies Inc. is a subsidiary of



TUSA İTAS





www.gsatcom.com

GSATCOM No Header